

# Central Neighbourhood Plan | Open House 1

# CNP Options



# CNP Design Options

## A Menu of Choices

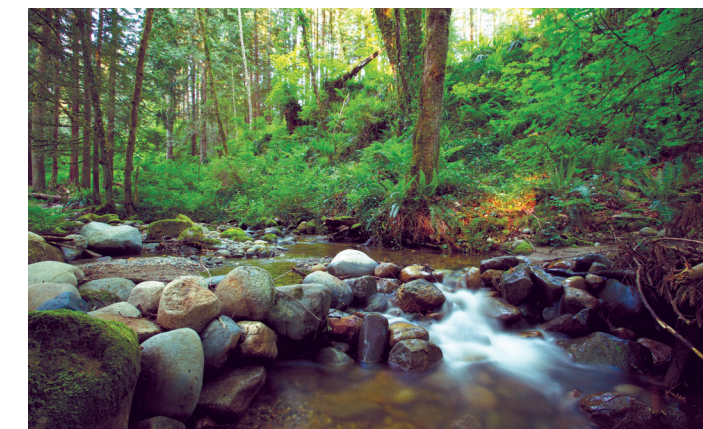
### Explorations in Community Form

The updated CNP technical studies and landowner consultation have permitted a revisiting of the MIS framework in specific areas where topography, land ownership, and infrastructure phasing enable further explorations in community form. The CNP Design Options identify alternatives to the Design Foundation to be considered and evaluated, both individually and/or in series, for inclusion in a Preferred Neighbourhood Land Use Plan.

### Evaluating the Options

CNP Options have been organized according to the Lower, Mid and Upper Slope Precincts reflecting the Neighbourhood Framework, Major Street Network, and Precinct Classifications. The Options are presented using the following lenses to help determine the optimal approach to a complete + viable community:

- **Land Use** | Visualizing the Complete Community
- **Structuring Diagram** | Highlighting the Key Civic Elements
- **3D Model View** | Understanding the Topographic Fit





# CNP Options

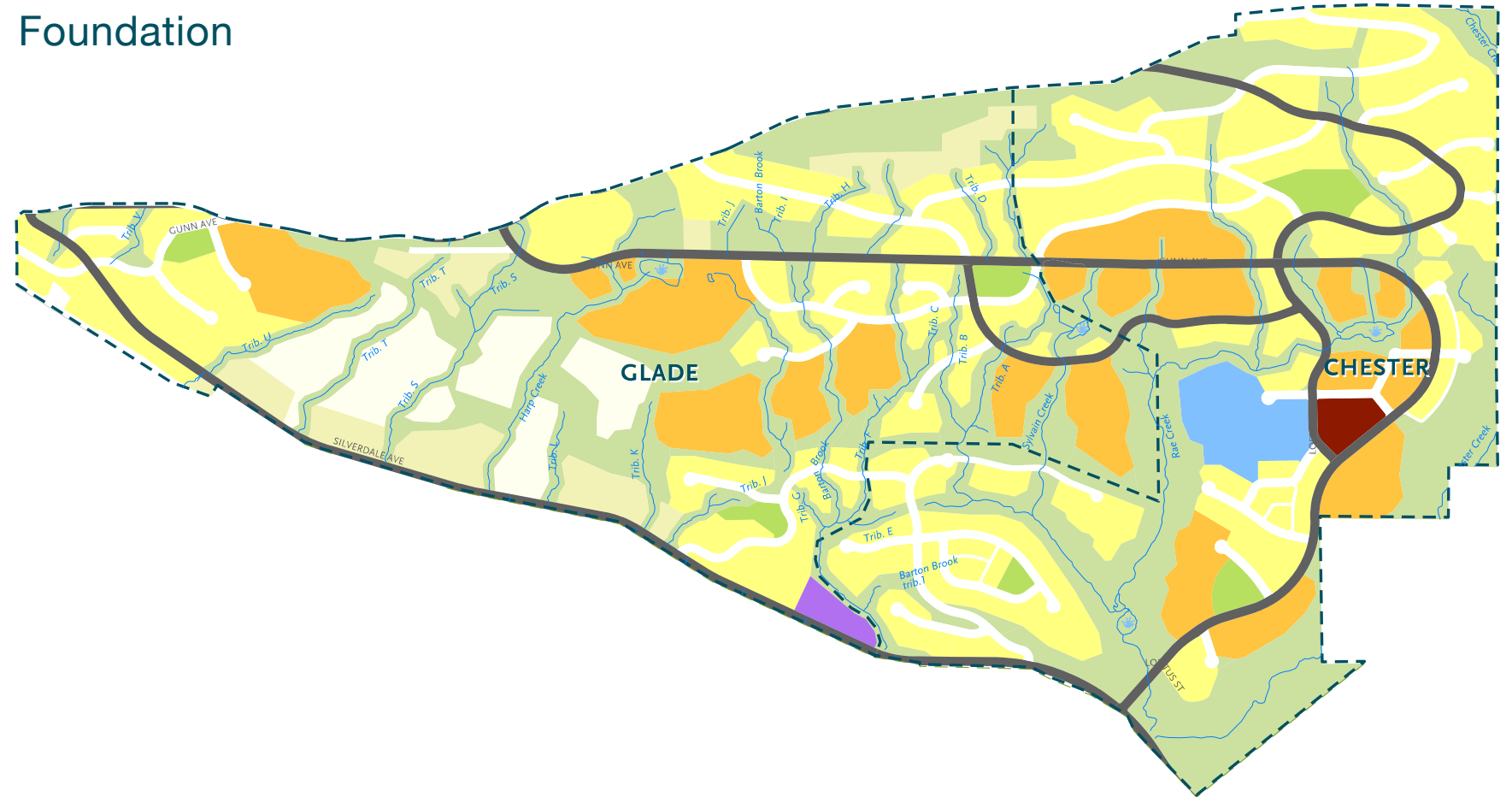
## Land Use | Lower Slopes



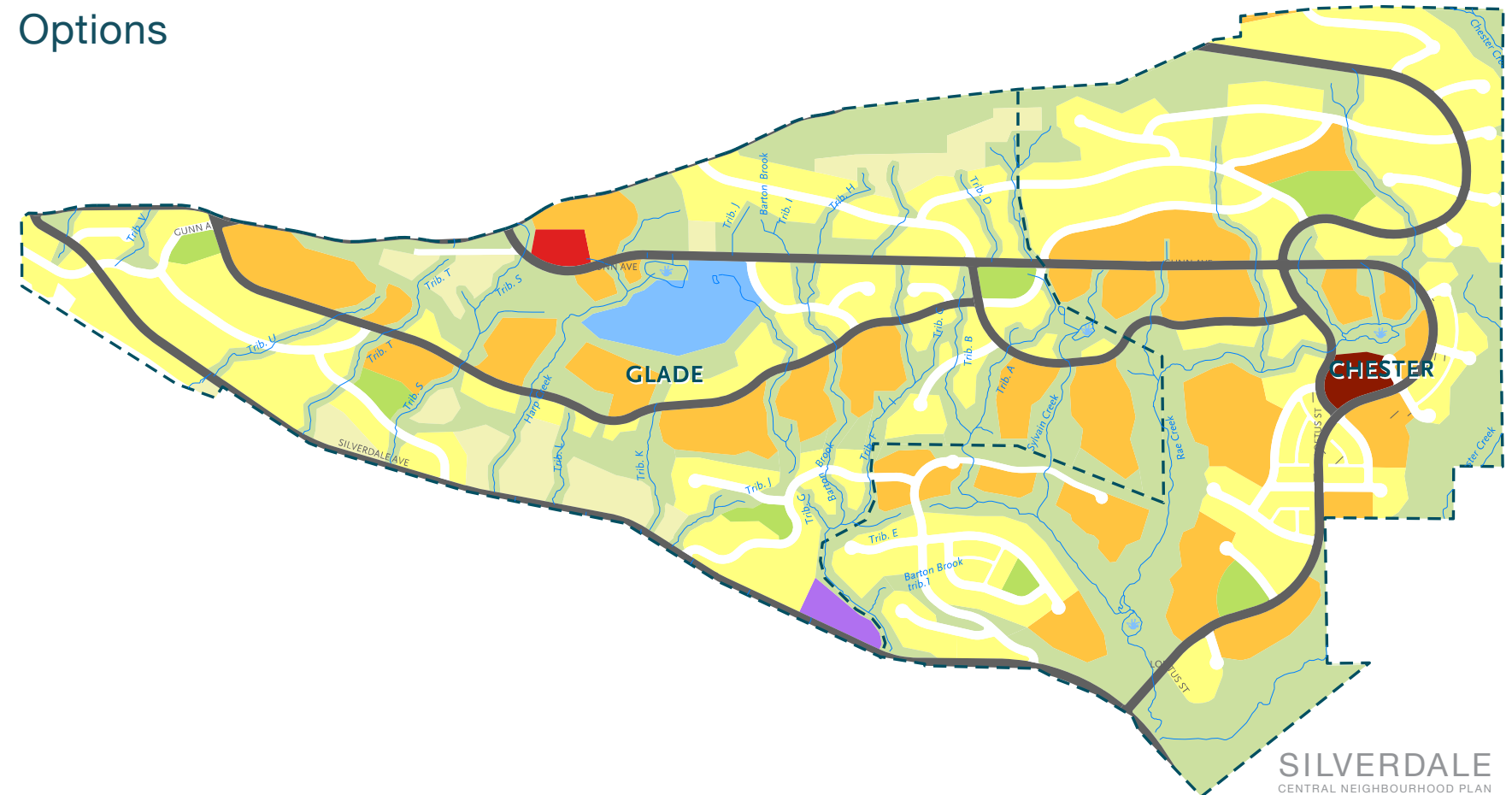
### Option Explorations

- Selecting the most strategic location for the Neighbourhood's first Joint Elementary School + Neighbourhood Park
- Jumpstarting the community with increased density to accelerate the financing of required Silverdale trunk infrastructure
- Establishing a new civic node with repositioned Commercial, School + Park to better serve the Glade
- Enabling a new neighbourhood corridor linking to Chester through rural Glade landholdings with ground-oriented density utilizing planned trunk infrastructure

### Foundation



### Options



# CNP Options

## Structuring | Lower Slopes



### Foundation



### Options



### Option Explorations

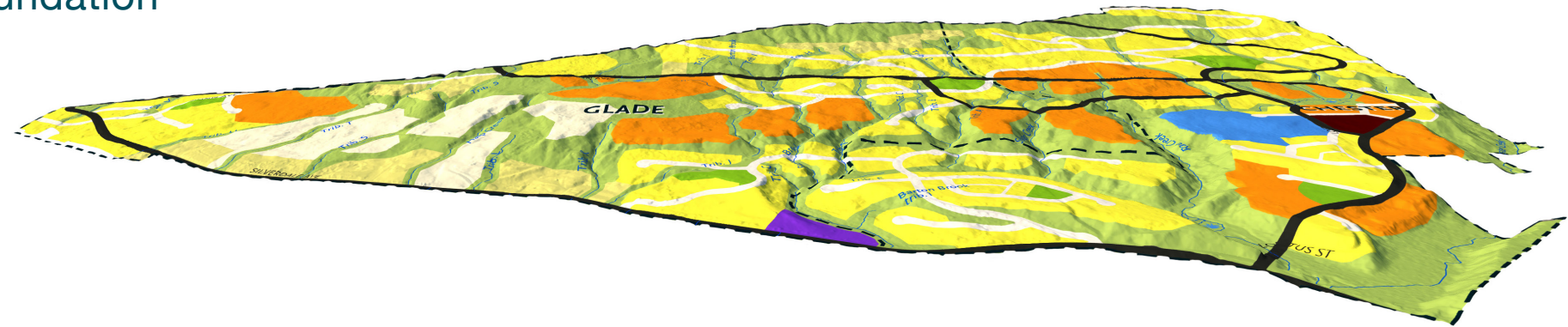
- Selecting the most strategic location for the Neighbourhood's first Joint Elementary School + Neighbourhood Park
- Jumpstarting the community with increased density to accelerate the financing of required Silverdale trunk infrastructure
- Establishing a new civic node with repositioned Commercial, School + Park to better serve the Glade
- Enabling a new neighbourhood corridor linking to Chester through rural Glade landholdings with ground-oriented density utilizing planned trunk infrastructure

# CNP Options

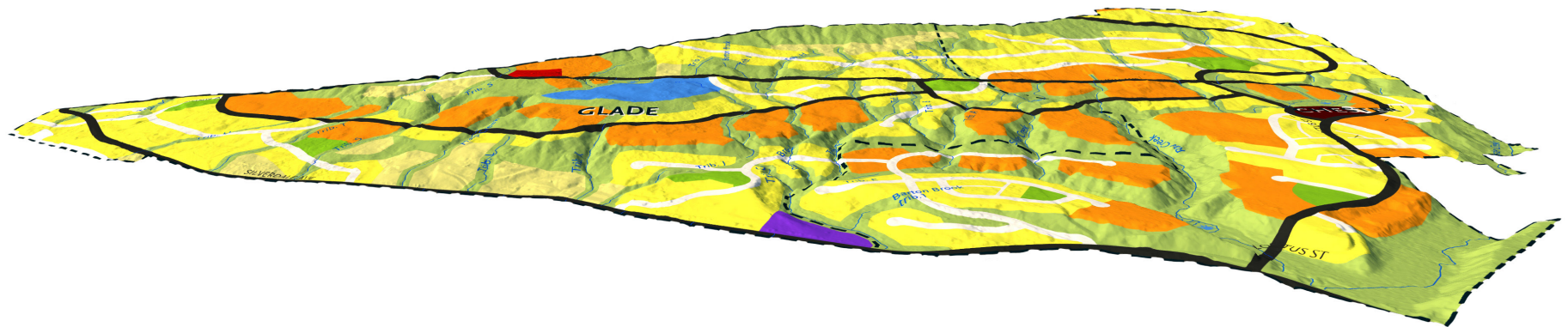
## 3D Model | Lower Slopes



Foundation



Options



### Option Explorations

- Selecting the most strategic location for the Neighbourhood's first Joint Elementary School + Neighbourhood Park
- Jumpstarting the community with increased density to accelerate the financing of required Silverdale trunk infrastructure
- Establishing a new civic node with repositioned Commercial, School + Park to better serve the Glade
- Enabling a new neighbourhood corridor linking to Chester through rural Glade landholdings with ground-oriented density utilizing planned trunk infrastructure



# CNP Options

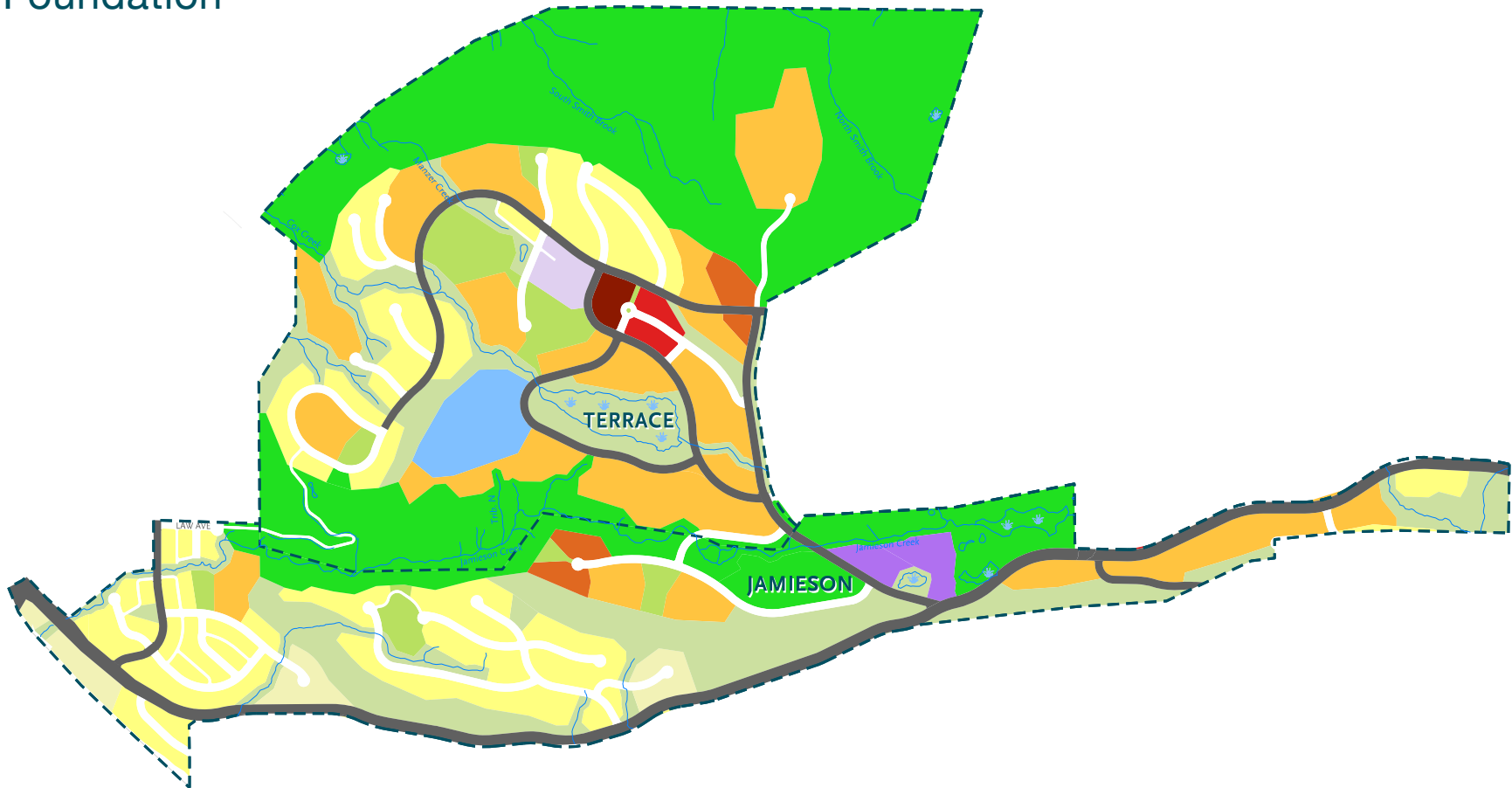
## Land Use | Mid-Slopes



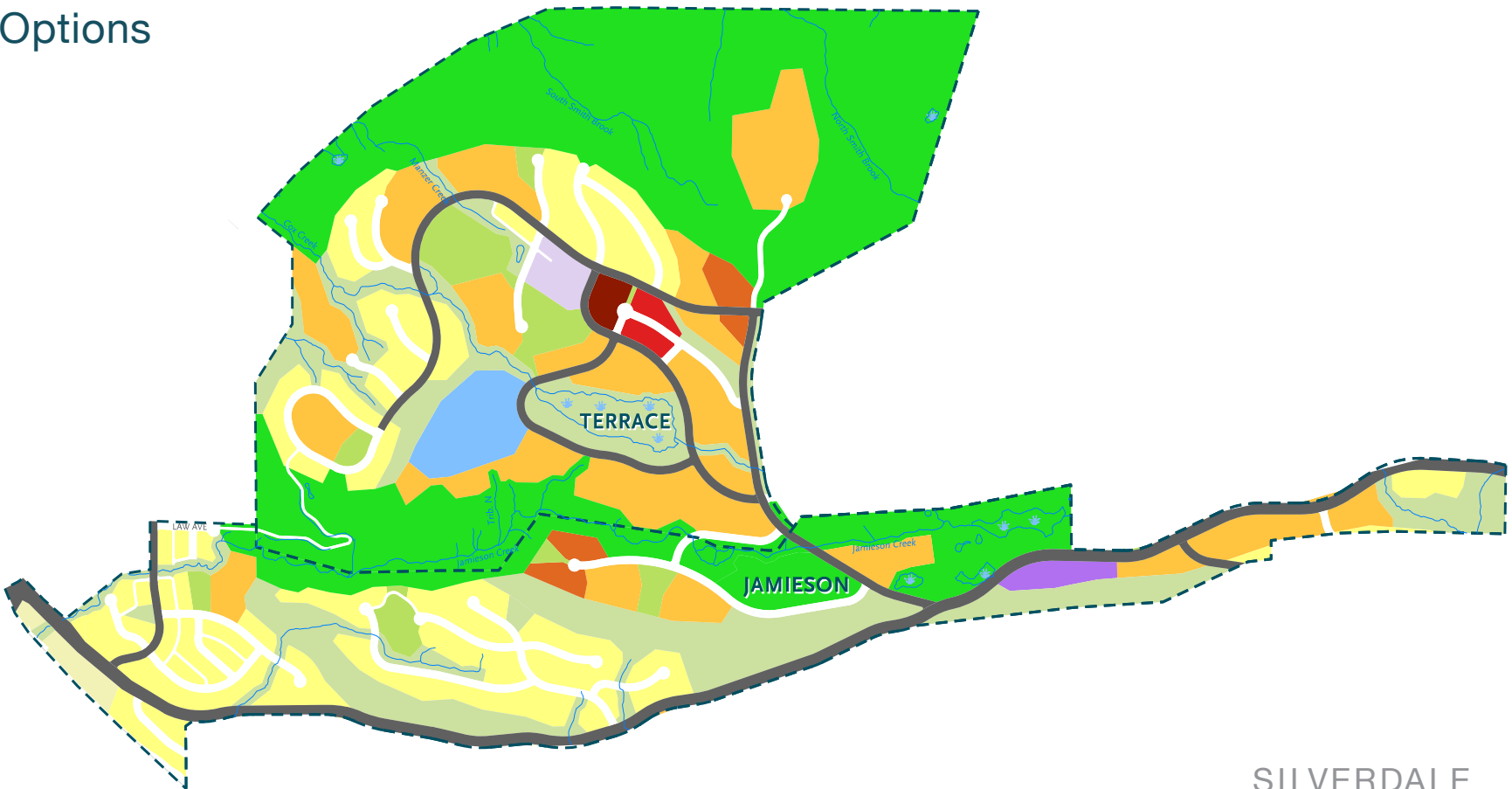
### Option Explorations

- Selecting the most strategic location for the Neighbourhood's new Firehall
- Increasing ground-oriented residential density along Silverdale's east-west arterial corridor

Foundation



Options



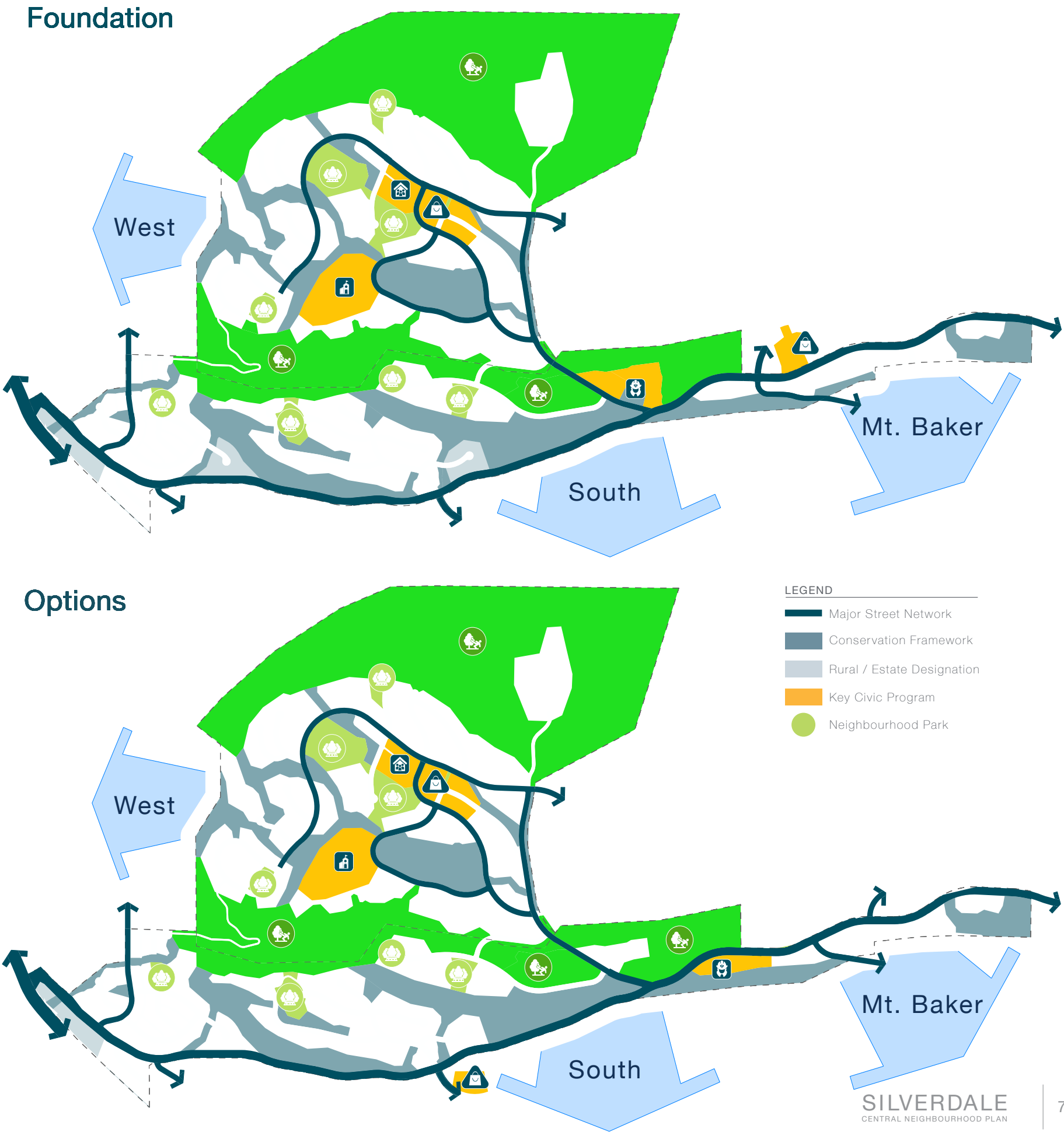
# CNP Options

## Structuring | Mid-Slopes



### Option Explorations

- Selecting the most strategic location for the Neighbourhood's new Firehall
- Increasing ground-oriented residential density along Silverdale's east-west arterial corridor

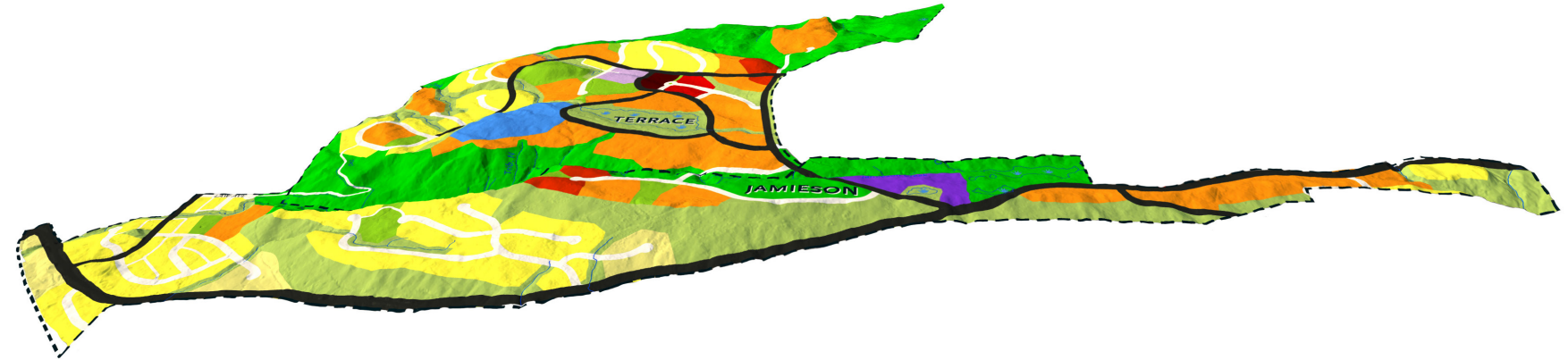


# CNP Options

## 3D Model | Mid-Slopes



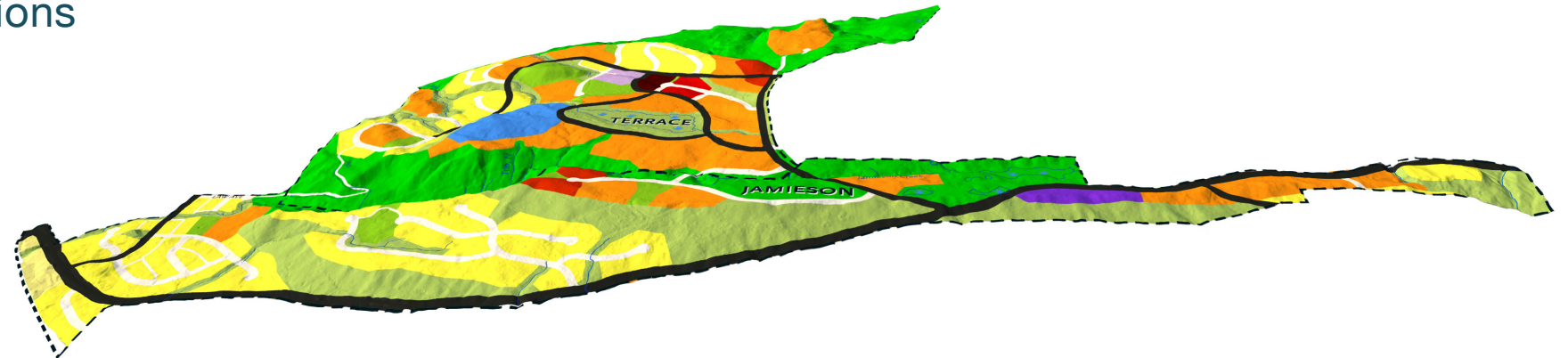
Foundation



### Option Explorations

- Selecting the most strategic location for the Neighbourhood's new Firehall
- Increasing ground-oriented residential density along Silverdale's east-west arterial corridor

Options





# CNP Options

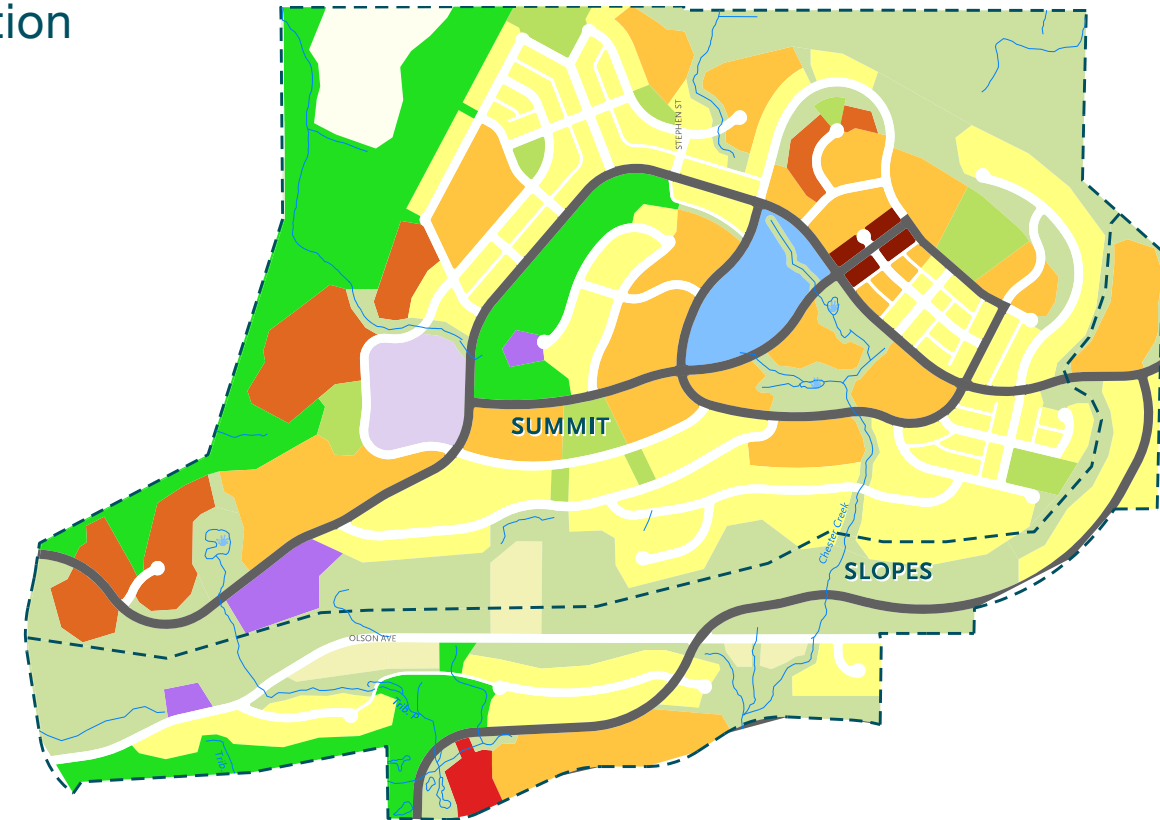
## Land Use | Upper Slopes



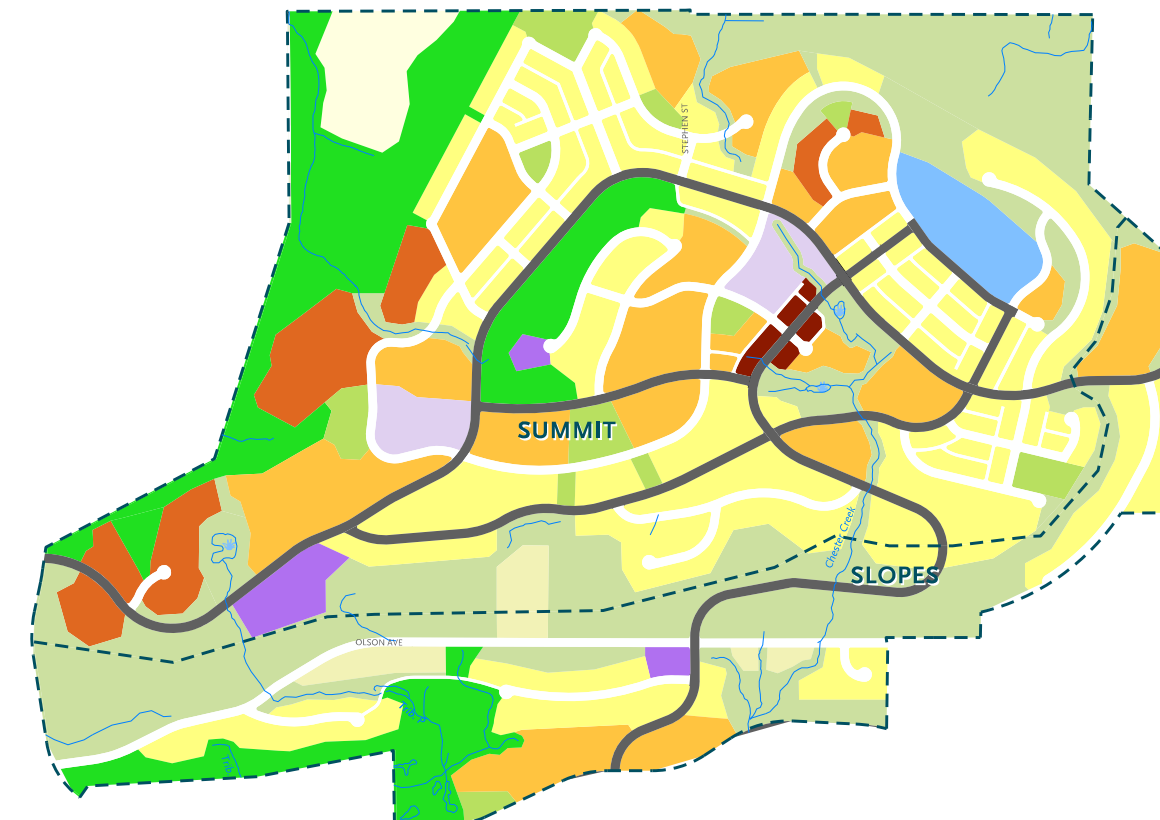
### Option Explorations

- Avoiding ESA with an alternate collector alignment between the east-west arterial and Olson Avenue
- Establishing a southern gateway to the Summit with an alternate collector alignment above Olson Avenue
- Repositioning the Summit mixed-use 'urban village' in conjunction with the southern gateway collector
- Establishing a more distributed pattern of Civic Facilities across the Summit
- Relocating the Slopes commercial crossing to support the Glade civic node
- Repositioning the first reservoir on Olson Avenue

### Foundation



### Options



# CNP Options

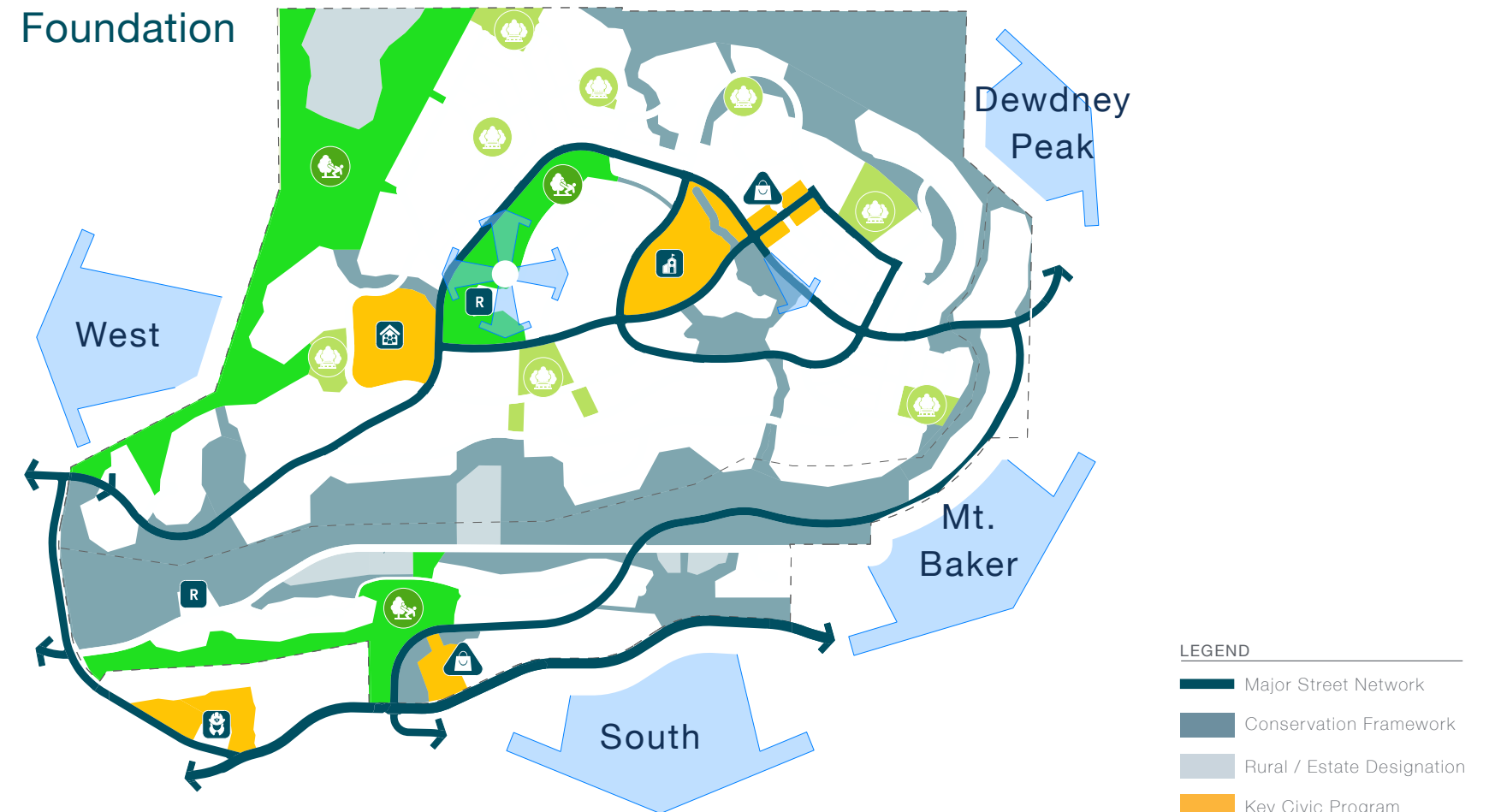
## Structuring | Upper Slopes



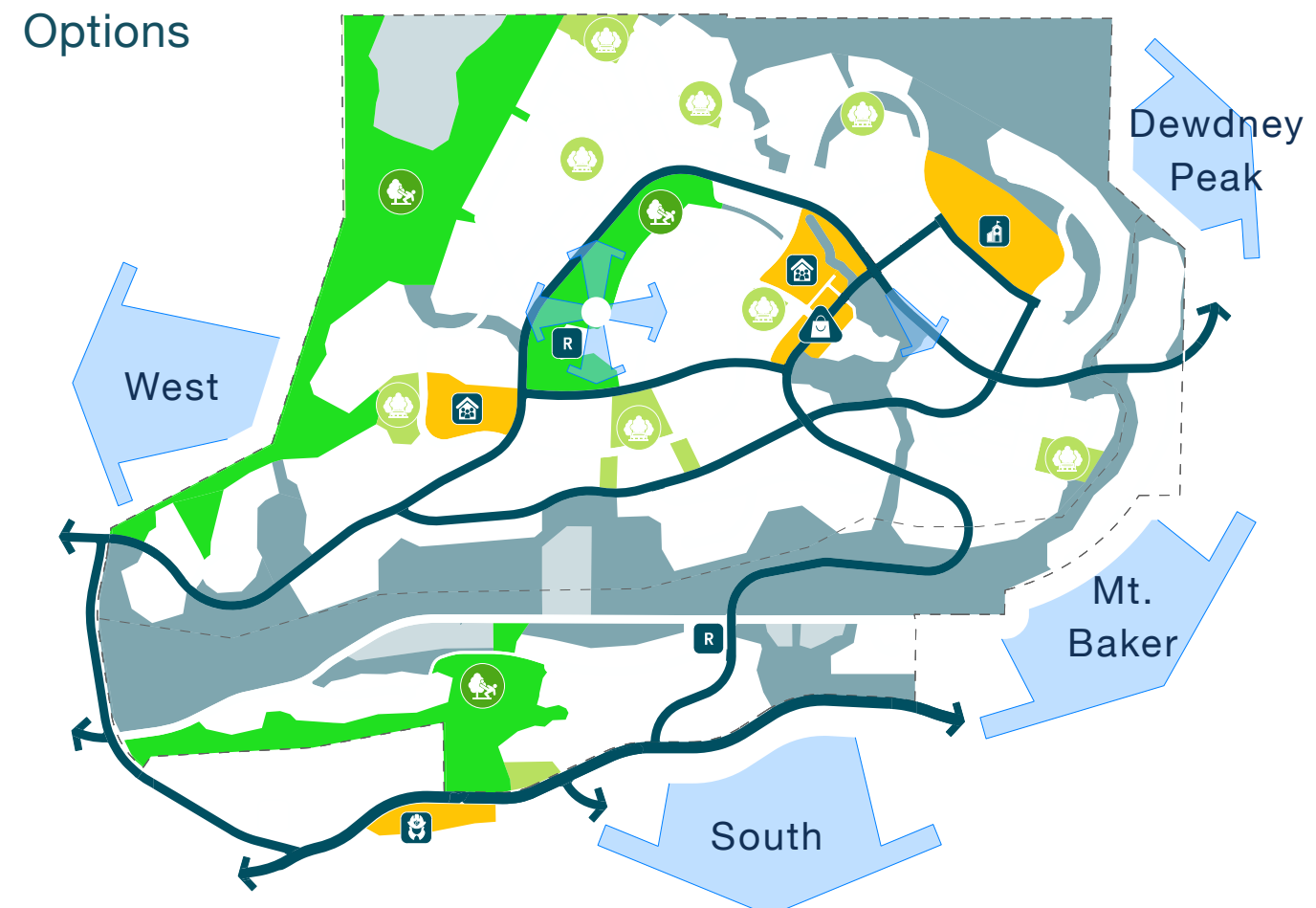
### Option Explorations

- Avoiding ESA with an alternate collector alignment between the east-west arterial and Olson Avenue
- Establishing a southern gateway to the Summit with an alternate collector alignment above Olson Avenue
- Repositioning the Summit mixed-use 'urban village' in conjunction with the southern gateway collector
- Establishing a more distributed pattern of Civic Facilities across the Summit
- Relocating the Slopes commercial crossing to support the Glade civic node
- Repositioning the first reservoir on Olson Avenue

Foundation



Options



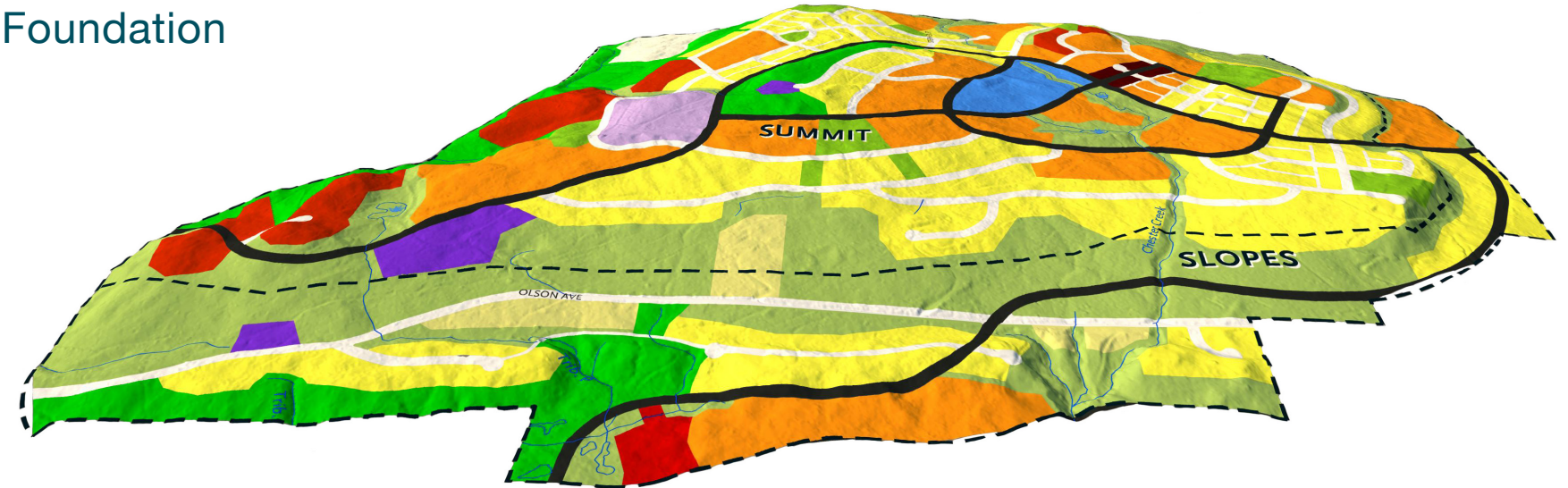


# CNP Options

## 3D Model | Upper Slopes



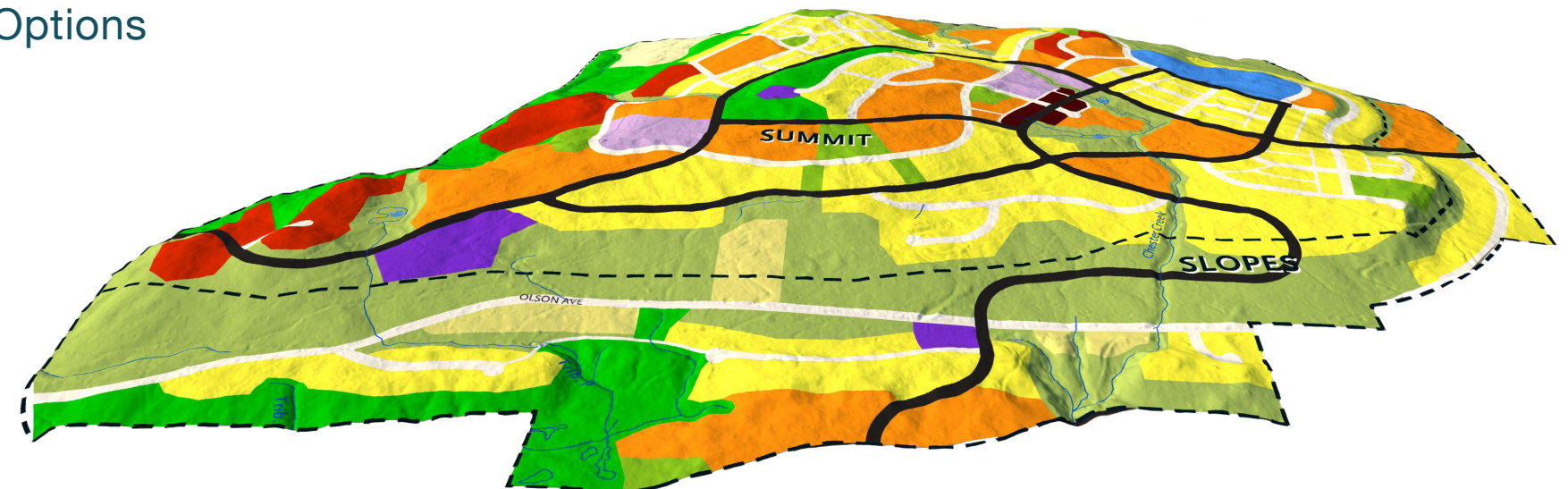
Foundation



### Option Explorations

- Avoiding ESA with an alternate collector alignment between the east-west arterial and Olson Avenue
- Establishing a southern gateway to the Summit with an alternate collector alignment above Olson Avenue
- Repositioning the Summit mixed-use 'urban village' in conjunction with the southern gateway collector
- Establishing a more distributed pattern of Civic Facilities across the Summit
- Relocating the Slopes commercial crossing to support the Glade civic node
- Repositioning the first reservoir on Olson Avenue

Options



# Central Neighbourhood Plan | Open House 1

Thank you for viewing the CNP Open House materials!

Please return to the Open House hub to contribute to the conversation by completing the Feedback Form.